

StarBurn: Video Burner Wizard

August 16, 2007



Rocket Division Software
www.RocketDivision.com

Copyright © Rocket Division Software 2001-2007. All rights reserved.



MANUAL 4

VIDEO CD AND SUPER VIDEO CD 4

DVD-VIDEO..... 15

CONTACTS..... 24

COPYRIGHT

Copyright © Rocket Division Software 2001-2007. All rights reserved. No part of this publication may be reproduced, stored in a retrieval system, or transmitted in any form or by any means, electronic, mechanical, photocopying, recording or otherwise, without the prior written consent of Rocket Division Software.

TRADEMARKS

“StarBurn”, “Rocket Division Software” and the StarBurn and the Rocket Division Software logos are trademarks of Rocket Division Software which may be registered in some jurisdictions. All other trademarks are owned by their respective owners.

CHANGES

The material in this document is for information only and is subject to change without notice. While reasonable efforts have been made in the preparation of this document to assure its accuracy, Rocket Division Software assumes no liability resulting from errors or omissions in this document, or from the use of the information contained herein. Rocket Division Software reserves the right to make changes in the product design without reservation and without notification to its users.

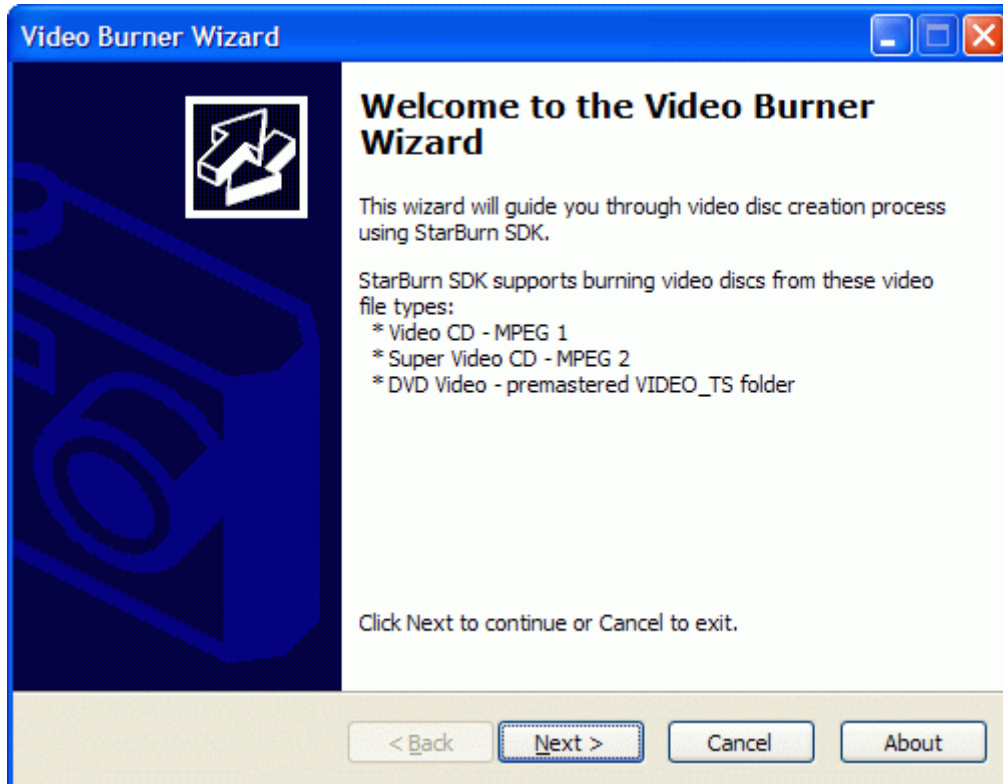
TECHNICAL SUPPORT AND SERVICES

If you have questions about installing or using this software, check this and other documents first - you will find answers to most of your questions here or there. If you need further assistance, please contact us.

MANUAL

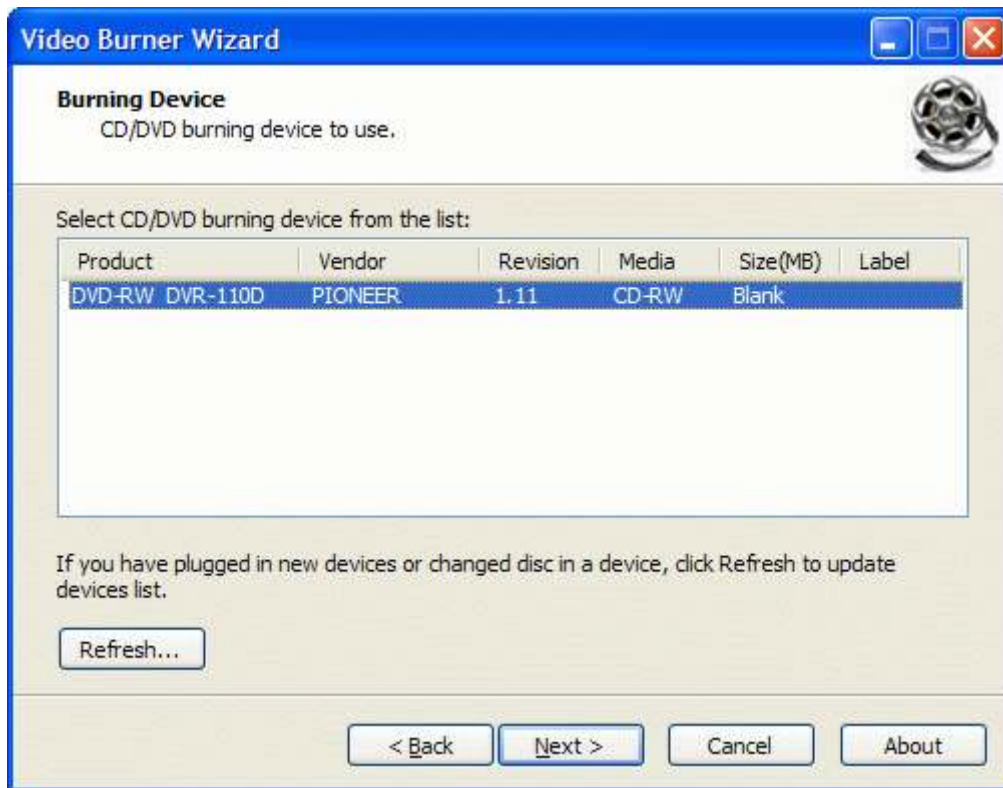
VIDEO CD AND SUPER VIDEO CD

Welcome to the **Video Burner Wizard** dialog appears.



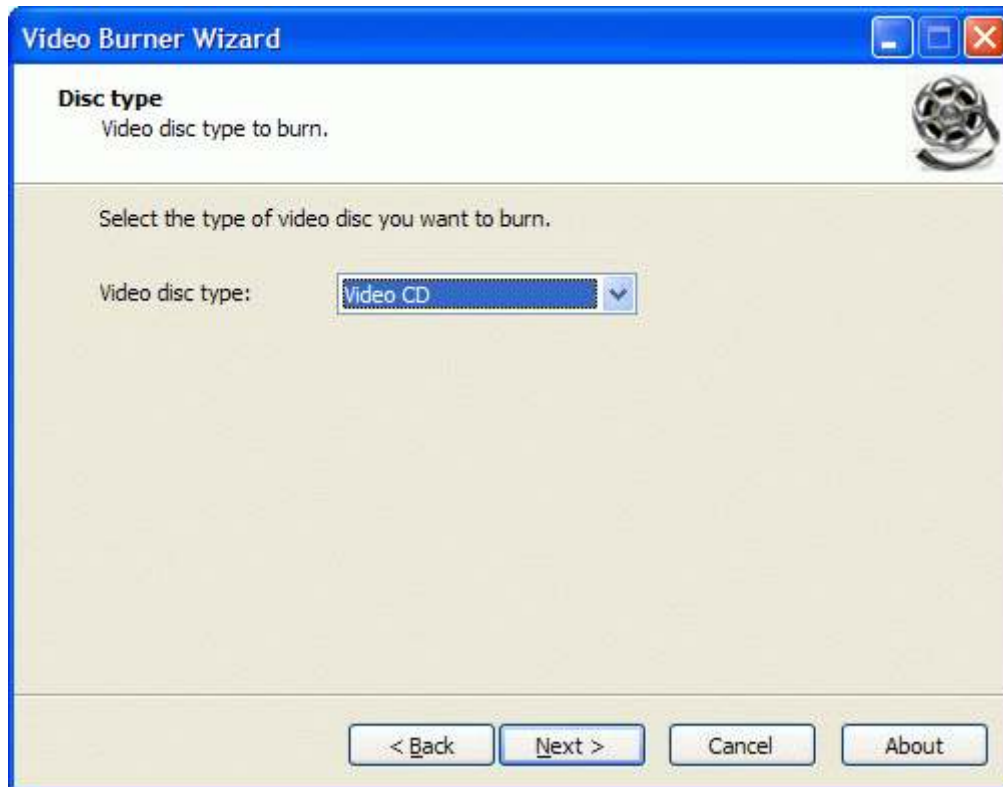
Press the **Next** button to continue.

If the CD writable media hasn't been inserted into the drive yet insert it and press **Refresh** button. Choose a burner from the list (the one you have inserted disc to).



Press the **Next** button to continue.

Select Video disc type to burn. For example select **Video CD...**



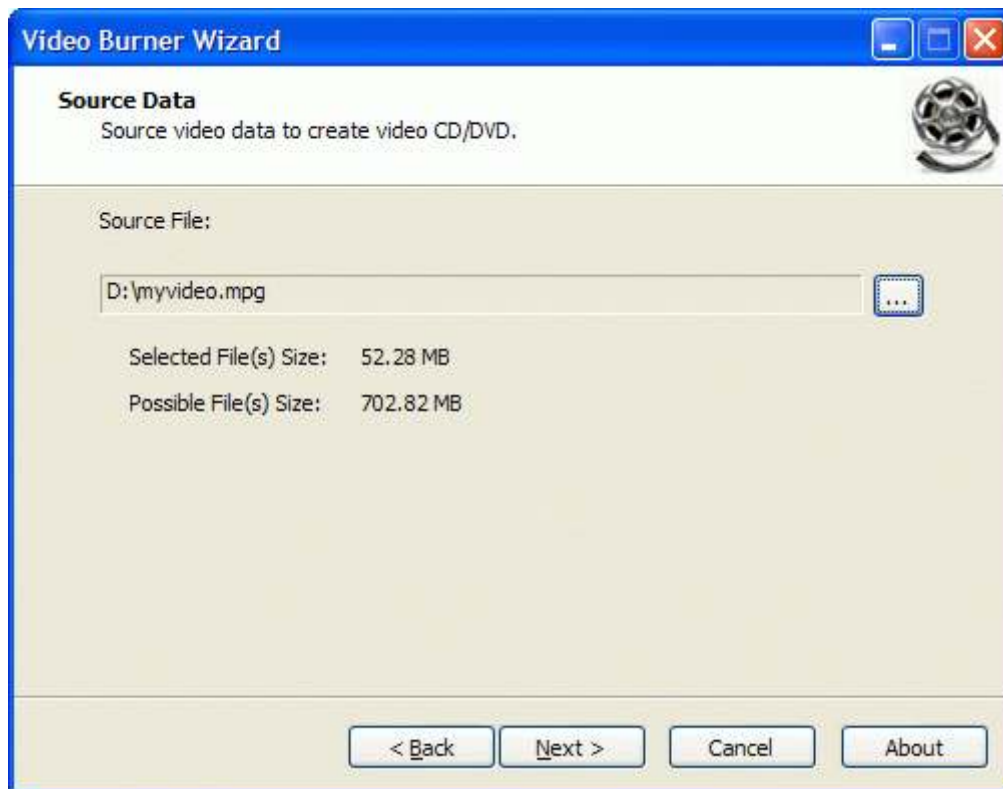
Press the **Next** button to continue.

...or **Super Video CD**.



Press the **Next** button to continue.

Specify **MPEG-1** file for **Video CD** or **MPEG-2** file for **Super Video CD**.



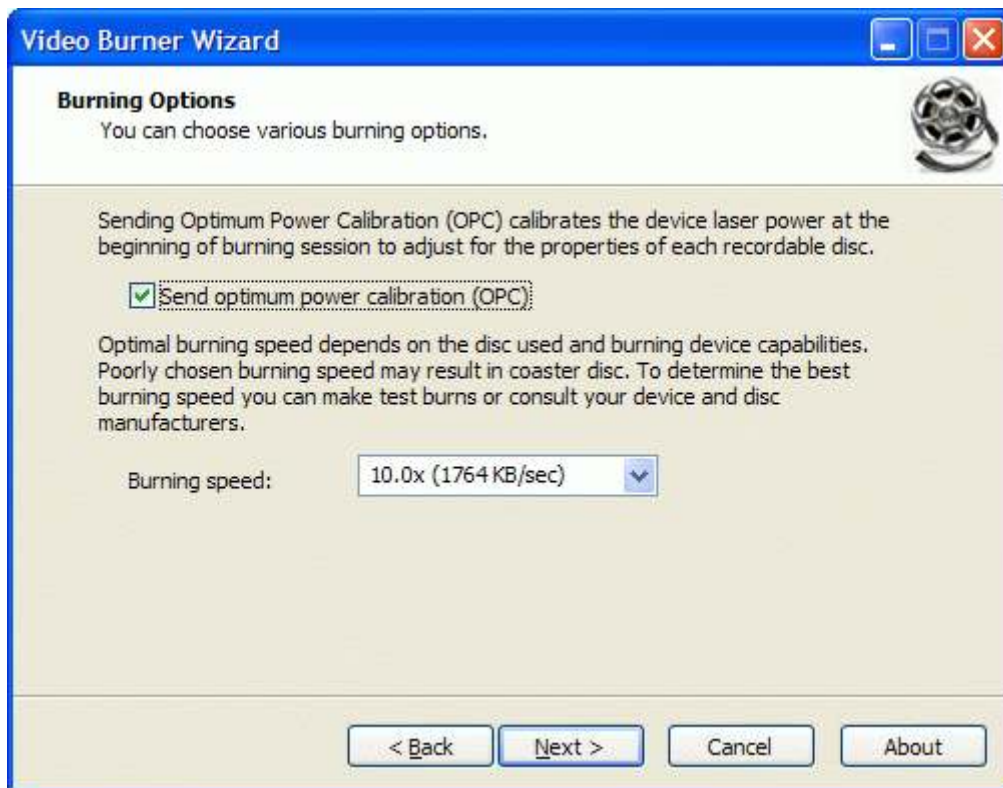
Press the **Next** button to continue.

Choose the burning mode. The default mode is **TAO**. The other available burning mode is **SAO**. Optionally you can enable **Test mode**. It is useful because it performs all of the burning steps but with laser at the low power. So you can check for burning errors to prevent media damage.



Press the **Next** button to continue.

Optionally you can check/uncheck **Send OPC** checkbox. Select desired speed from the list of the supported burning speeds.



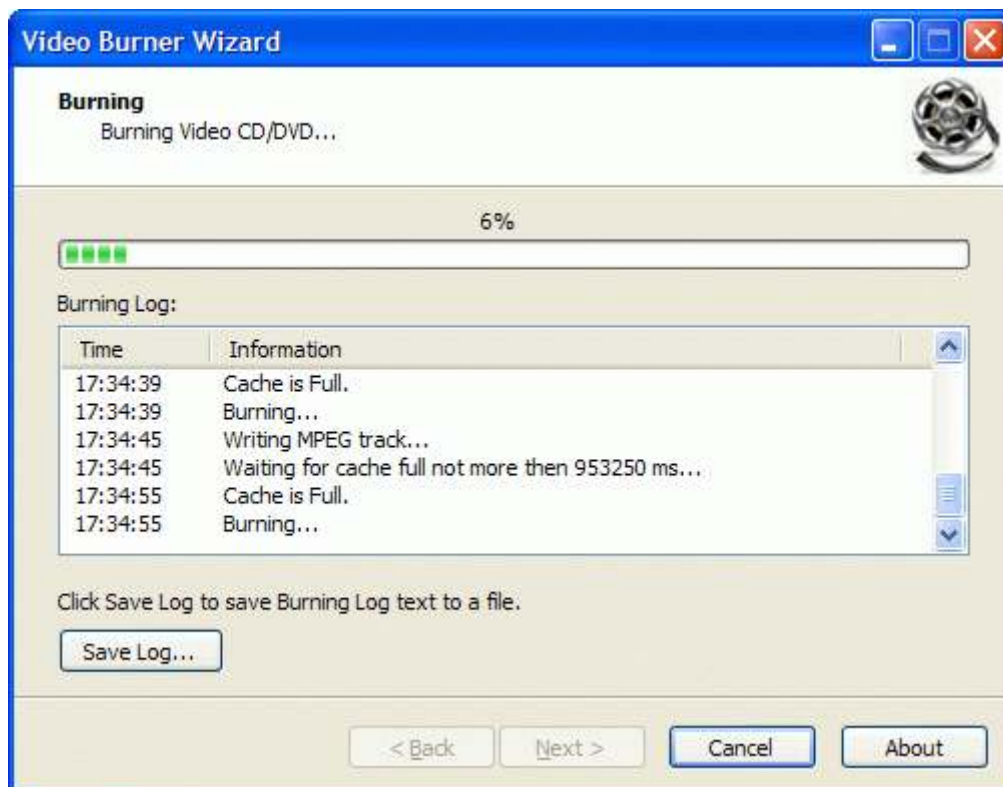
Press the **Next** button to continue.

Please review the options summary and make sure all the options are correct ones (have been set by you on the previous pages). If you need to apply any changes press the **Back** button to toggle wrong settings.



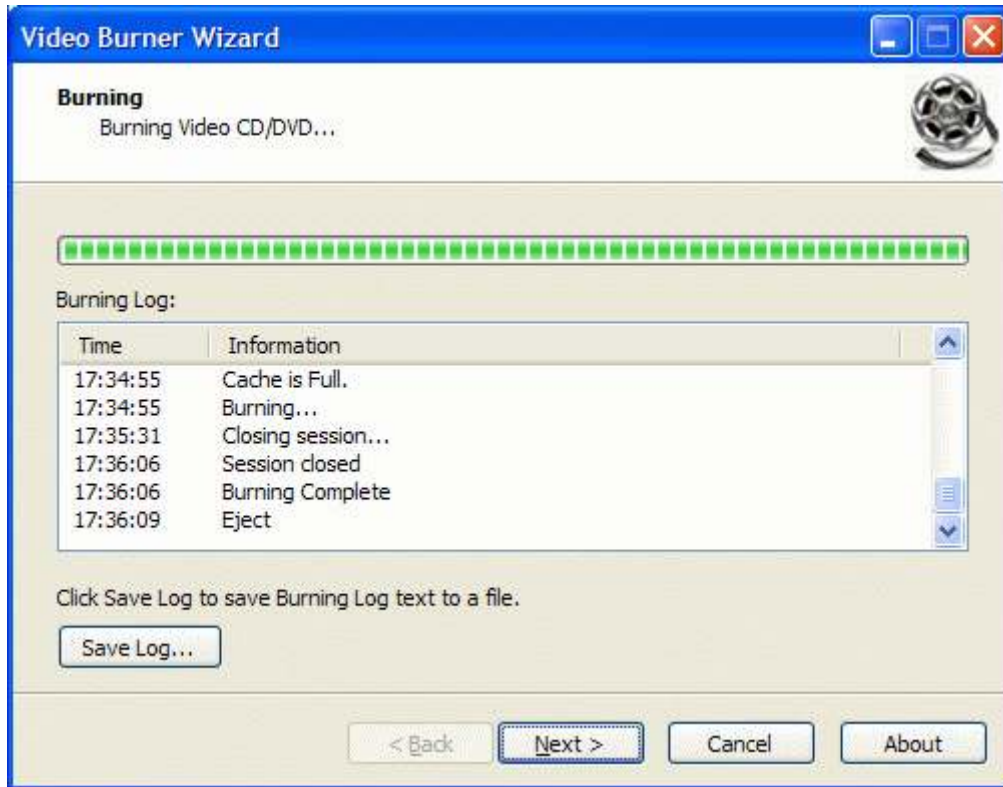
Press the **Next** button to begin burning.

Disc burning is in the progress.



Press the **Cancel** button to cancel burning or just wait for the process completion.

When burning is complete optionally you can save the log pressing **Save Log** button. This option is useful when burning problems are occurred and you'd like to send failed operation log to the support.



Press the **Next** button to continue.

Completing the **Video Burner Wizard** dialog appears.



Press the **Finish** button to exit the wizard.

DVD-VIDEO

Welcome to the **Video Burner Wizard** dialog appears.



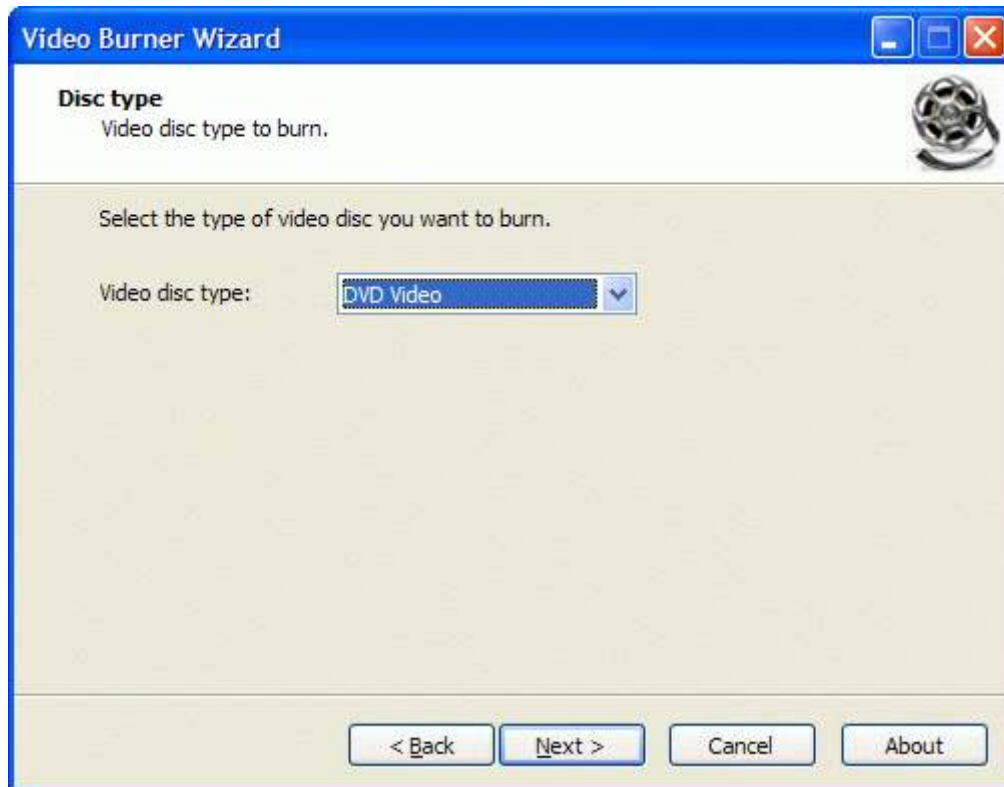
Press the **Next** button to continue.

If the DVD writable media hasn't been inserted into the drive yet insert it and press **Refresh** button. Choose a burner from the list (the one you have inserted disc to).



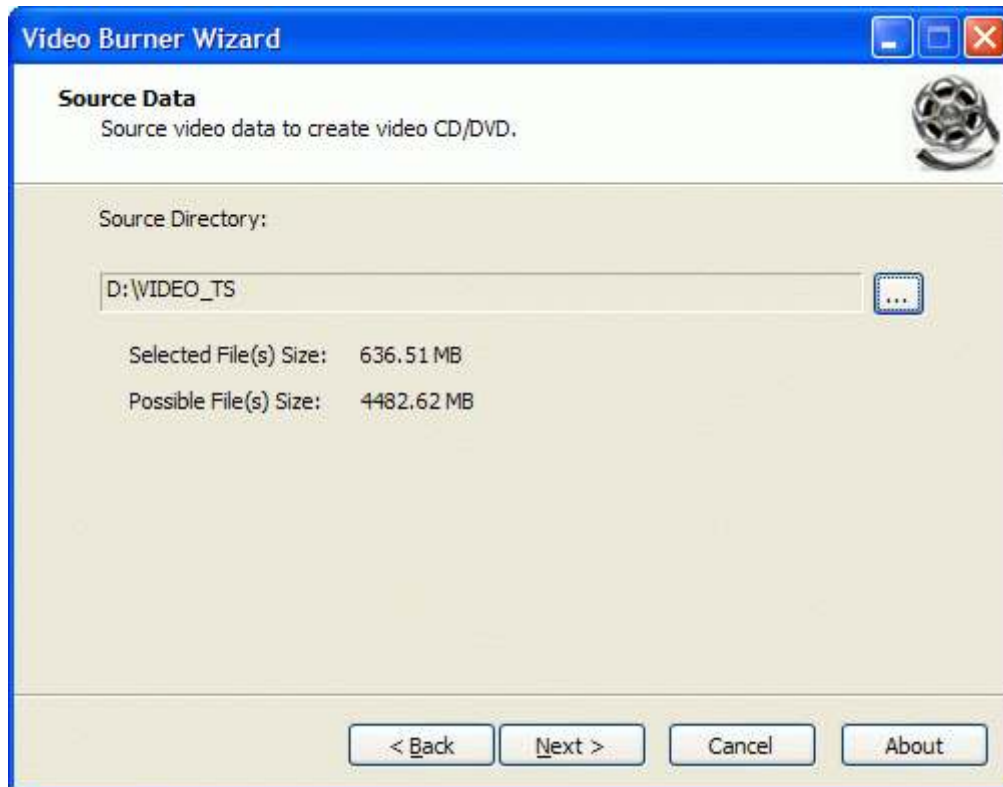
Press the **Next** button to continue.

Select **Video disc type** to burn. For DVD-Video it should be **DVD Video**.



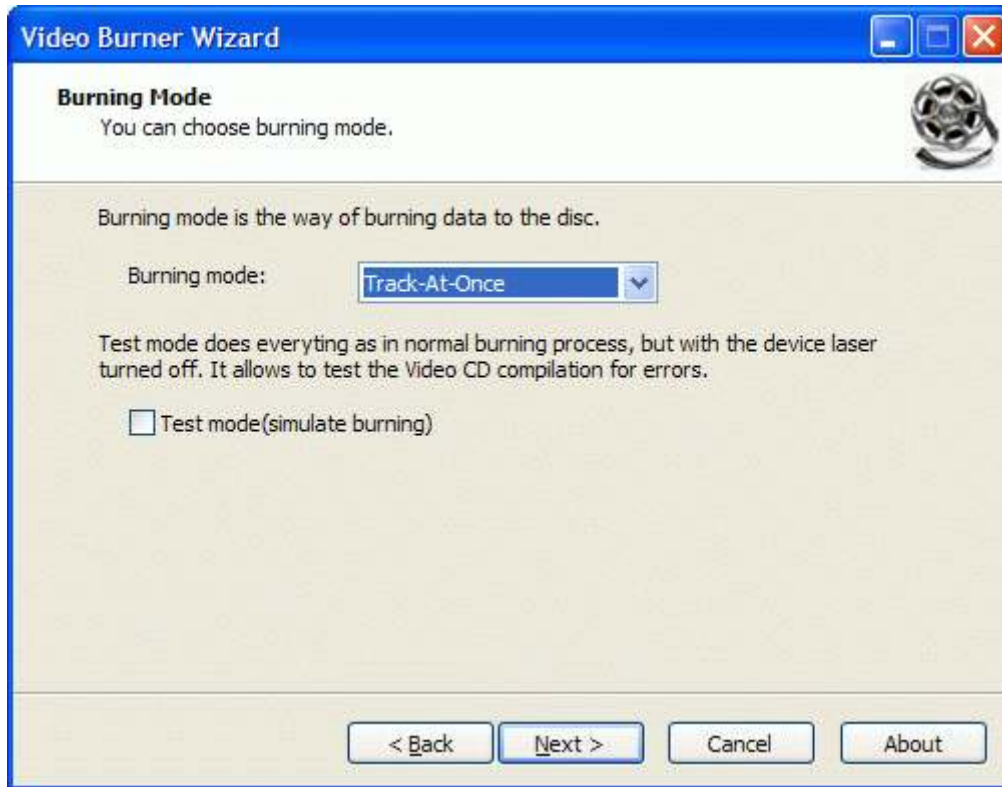
Press the **Next** button to continue.

Specify source directory for DVD-Video source content.



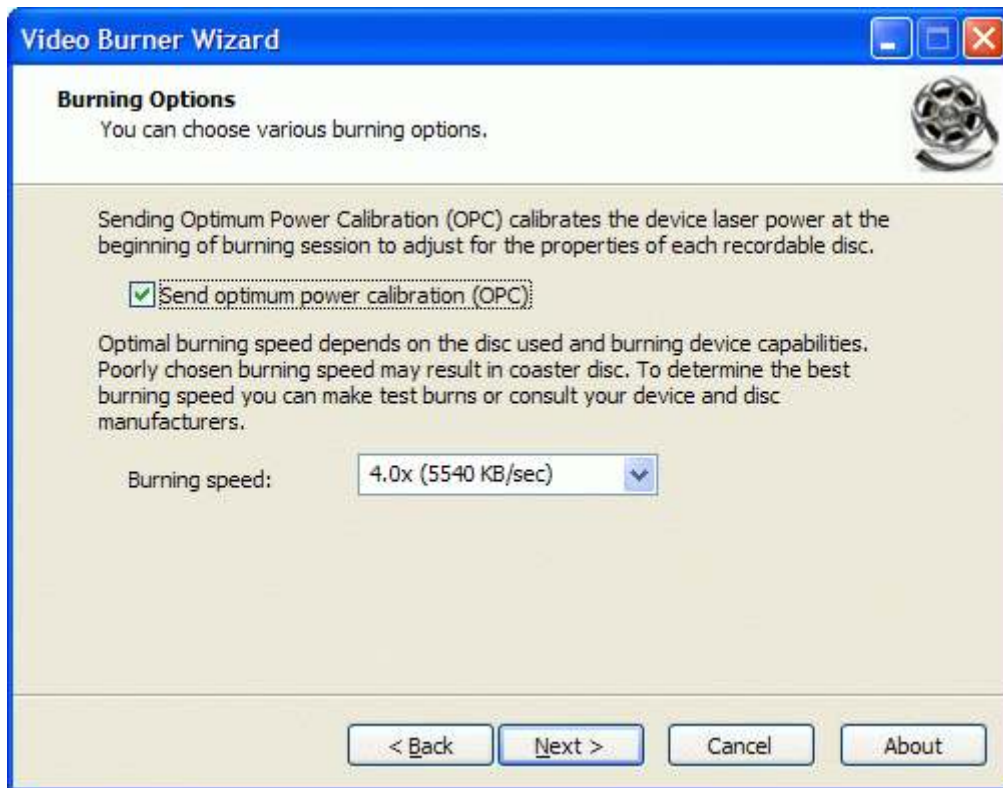
Press the **Next** button to continue.

Choose the burning mode. The only available mode is **TAO**. Optionally you can enable **Test mode**. It is useful because it performs all of the burning steps but with laser at the low power. So you can check for burning errors to prevent media damage.



Press the **Next** button to continue.

Optionally you can check/uncheck **Send OPC** checkbox. Select desired speed from the list of the supported burning speeds.



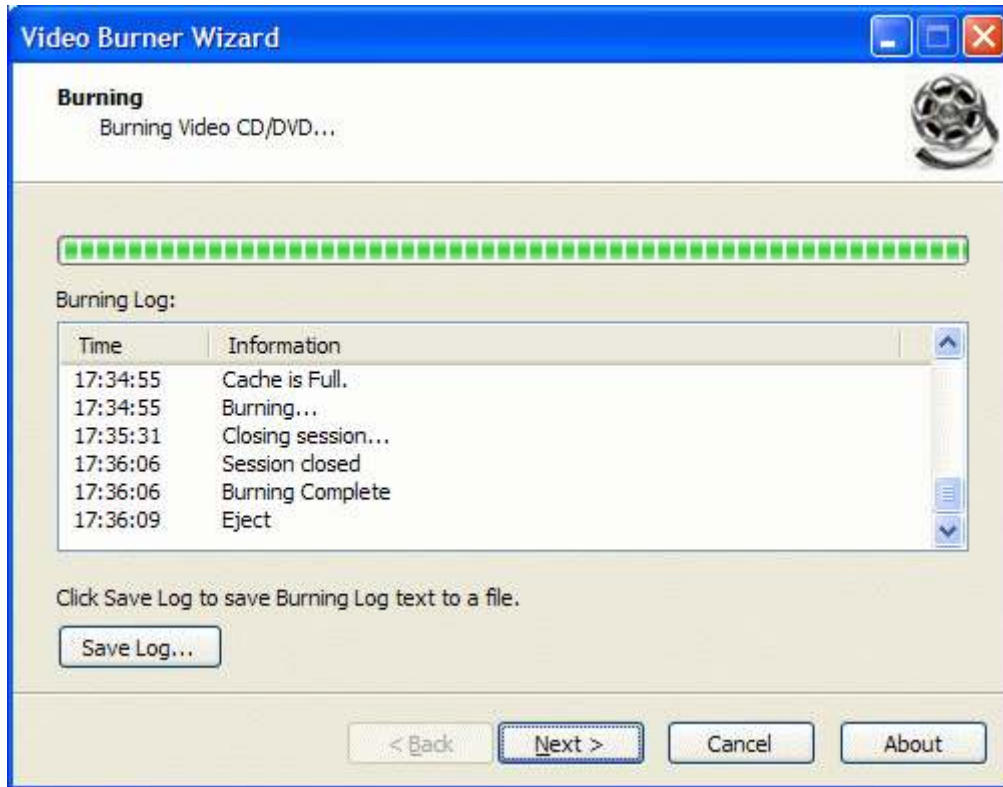
Press the **Next** button to continue.

Please review the options summary and make sure all the options are correct ones (have been set by you on the previous pages). If you need to apply any changes press the **Back** button to toggle wrong settings.



Press the **Next** button to begin burning.

When burning is complete optionally you can save the log by pressing **Save Log** button. This option is useful when burning problems are occurred and you'd like to send failed operation log to the support.



Press the **Next** button to continue.

Completing the **Video Burner Wizard** dialog appears.



Press the **Finish** button to exit the wizard.

CONTACTS

Support E-mail: Support@RocketDivision.com

Support Forum: www.RocketDivision.com/forum

Support FAQ: www.RocketDivision.com/faq.html

Sales E-mail: Sales@RocketDivision.com

Phone: +38 067 53 222 33, +38 067 53 222 53

Fax: +38 044 414 8717

Rocket Division Software
04210, Kyiv, Ukraine
Heroes of Stalingrad Str. 18B/Office 21
www.RocketDivision.com