

StarBurn: Image Grabber Wizard

August 8, 2007



Rocket Division Software
www.RocketDivision.com

Copyright © Rocket Division Software 2001-2007. All rights reserved.



MANUAL 4

CONTACTS..... 11

COPYRIGHT

Copyright © Rocket Division Software 2001-2007. All rights reserved. No part of this publication may be reproduced, stored in a retrieval system, or transmitted in any form or by any means, electronic, mechanical, photocopying, recording or otherwise, without the prior written consent of Rocket Division Software.

TRADEMARKS

“StarBurn”, “Rocket Division Software” and the StarBurn and the Rocket Division Software logos are trademarks of Rocket Division Software which may be registered in some jurisdictions. All other trademarks are owned by their respective owners.

CHANGES

The material in this document is for information only and is subject to change without notice. While reasonable efforts have been made in the preparation of this document to assure its accuracy, Rocket Division Software assumes no liability resulting from errors or omissions in this document, or from the use of the information contained herein. Rocket Division Software reserves the right to make changes in the product design without reservation and without notification to its users.

TECHNICAL SUPPORT AND SERVICES

If you have questions about installing or using this software, check this and other documents first - you will find answers to most of your questions here or there. If you need further assistance, please contact us.

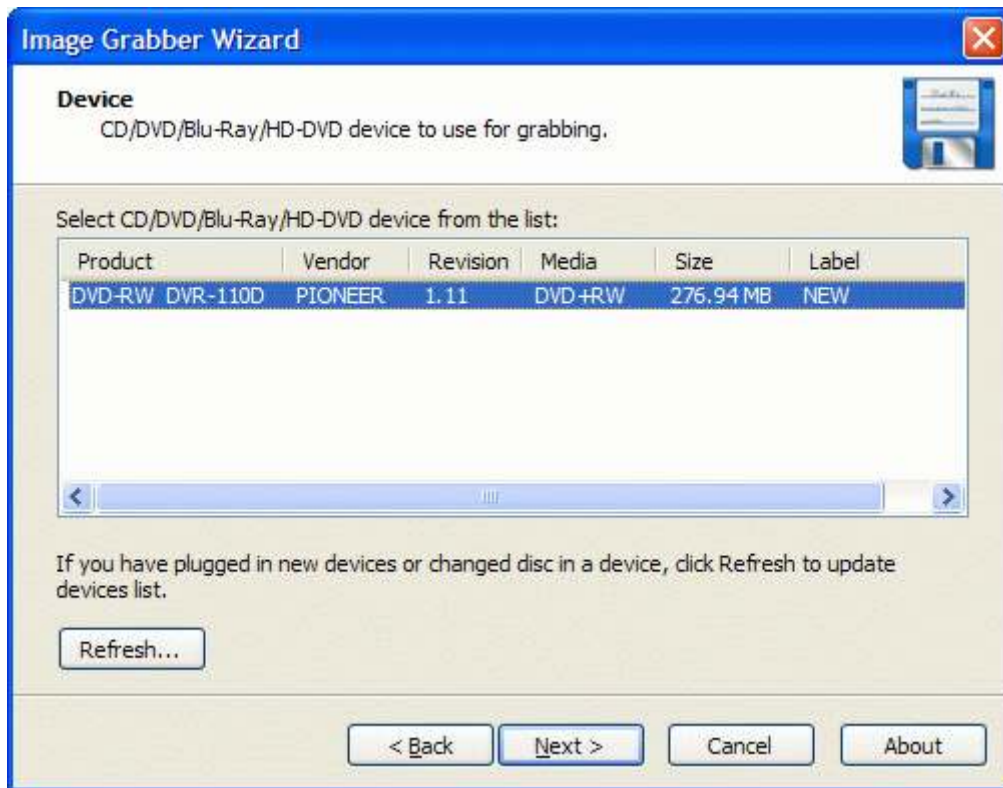
MANUAL

Welcome to the **Image Grabber Wizard** dialog appears.



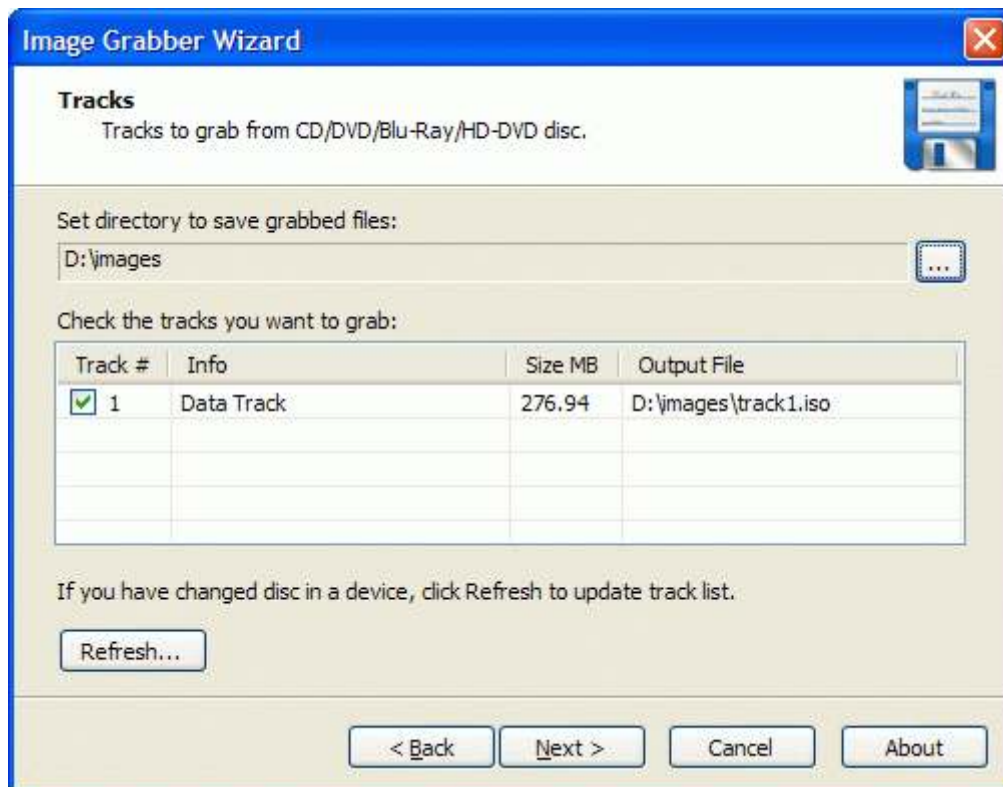
Press the **Next** button to continue.

If the disc hasn't been inserted into the drive yet please insert it and press **Refresh** button. Choose the drive from the list (the one you have inserted disc to).



Press the **Next** button to continue.

Specify directory to save grabbed data. Check the tracks you wish to grab.



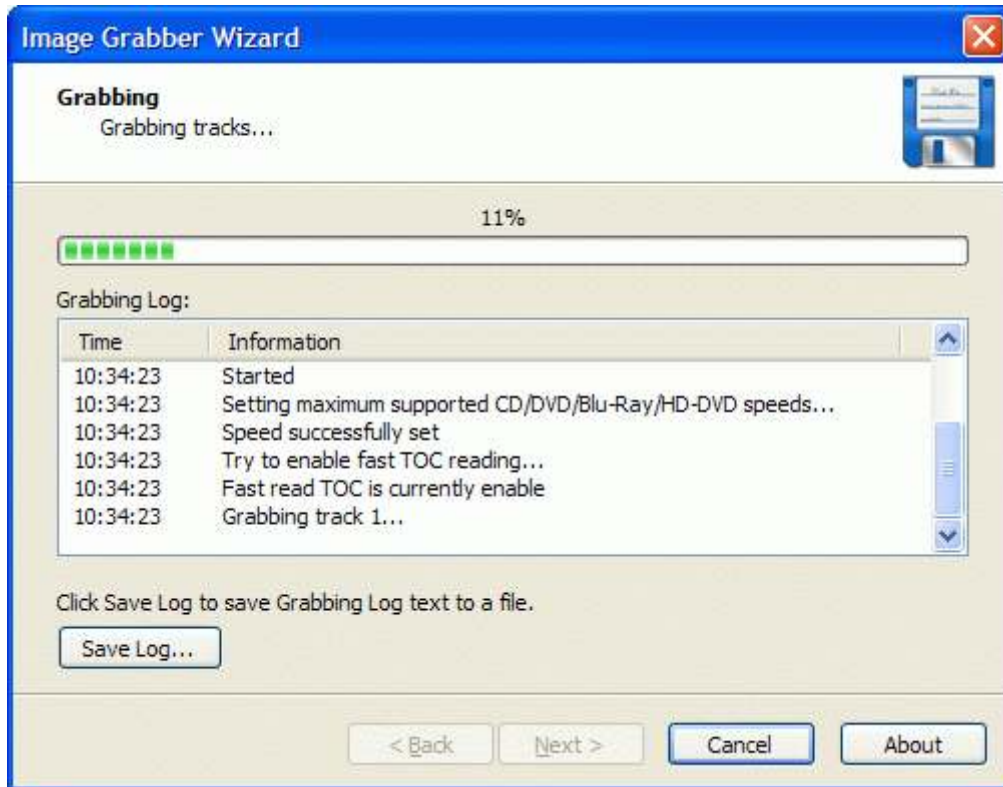
Press the **Next** button to continue.

Please review the options summary and make sure all the options are correct ones (have been set by you on the previous pages). If you need to apply any changes press the **Back** button to toggle wrong settings.



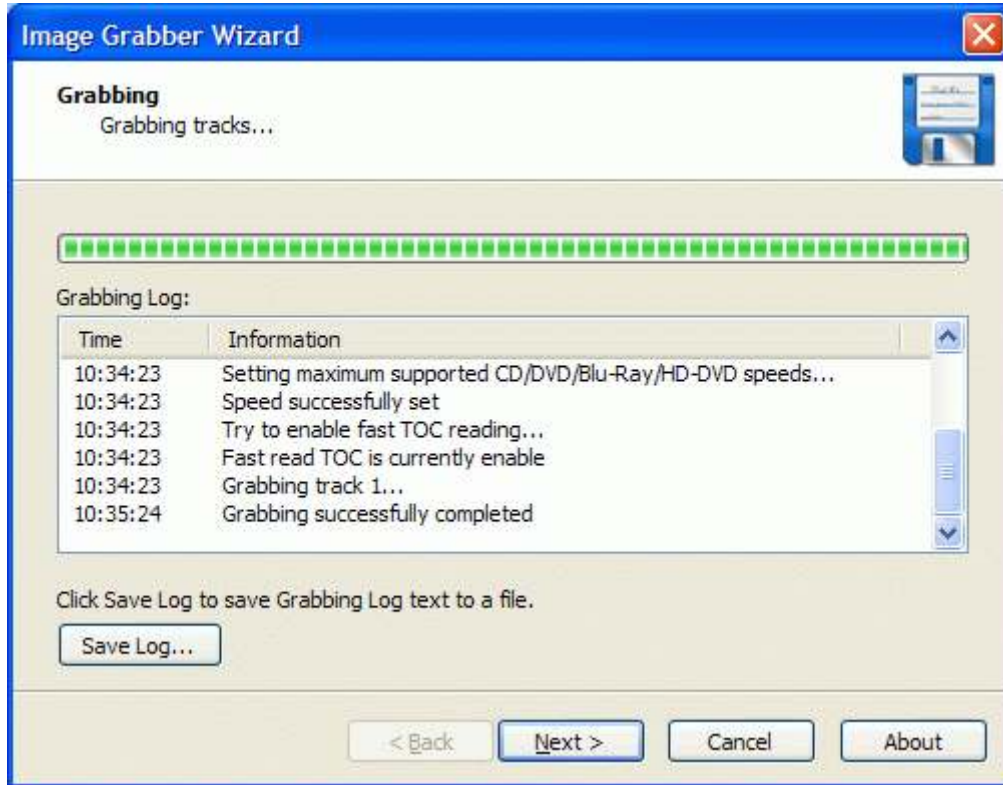
Press the **Next** button to begin grabbing.

Image grabbing is in the progress.



Press the **Cancel** button to cancel grabbing or just wait for the process completion.

When grabbing is complete optionally you can save the log by pressing **Save Log** button. This option is useful when grabbing problems are occurred and you'd like to send failed operation log to the support.



Press the **Next** button to continue.

Completing the **Image Grabber Wizard** dialog appears.



Press the **Finish** button to exit the wizard.

CONTACTS

Support E-mail: Support@RocketDivision.com

Support Forum: www.RocketDivision.com/forum

Support FAQ: www.RocketDivision.com/faq.html

Sales E-mail: Sales@RocketDivision.com

Phone: +38 067 53 222 33, +38 067 53 222 53

Fax: +38 044 414 8717

Rocket Division Software
04210, Kyiv, Ukraine
Heroes of Stalingrad Str. 18B/Office 21
www.RocketDivision.com