

StarBurn: Image Builder Wizard

August 8, 2007



Rocket Division Software
www.RocketDivision.com

Copyright © Rocket Division Software 2001-2007. All rights reserved.



MANUAL 4

CONTACTS..... 13

COPYRIGHT

Copyright © Rocket Division Software 2001-2007. All rights reserved. No part of this publication may be reproduced, stored in a retrieval system, or transmitted in any form or by any means, electronic, mechanical, photocopying, recording or otherwise, without the prior written consent of Rocket Division Software.

TRADEMARKS

“StarBurn”, “Rocket Division Software” and the StarBurn and the Rocket Division Software logos are trademarks of Rocket Division Software which may be registered in some jurisdictions. All other trademarks are owned by their respective owners.

CHANGES

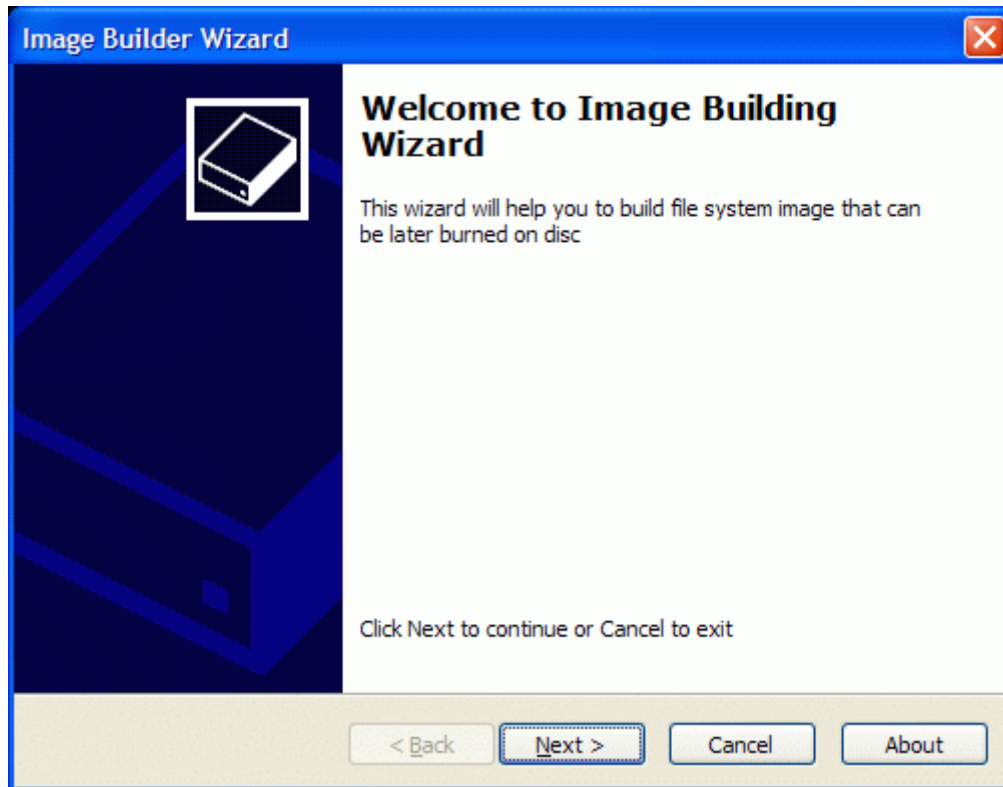
The material in this document is for information only and is subject to change without notice. While reasonable efforts have been made in the preparation of this document to assure its accuracy, Rocket Division Software assumes no liability resulting from errors or omissions in this document, or from the use of the information contained herein. Rocket Division Software reserves the right to make changes in the product design without reservation and without notification to its users.

TECHNICAL SUPPORT AND SERVICES

If you have questions about installing or using this software, check this and other documents first - you will find answers to most of your questions here or there. If you need further assistance, please contact us.

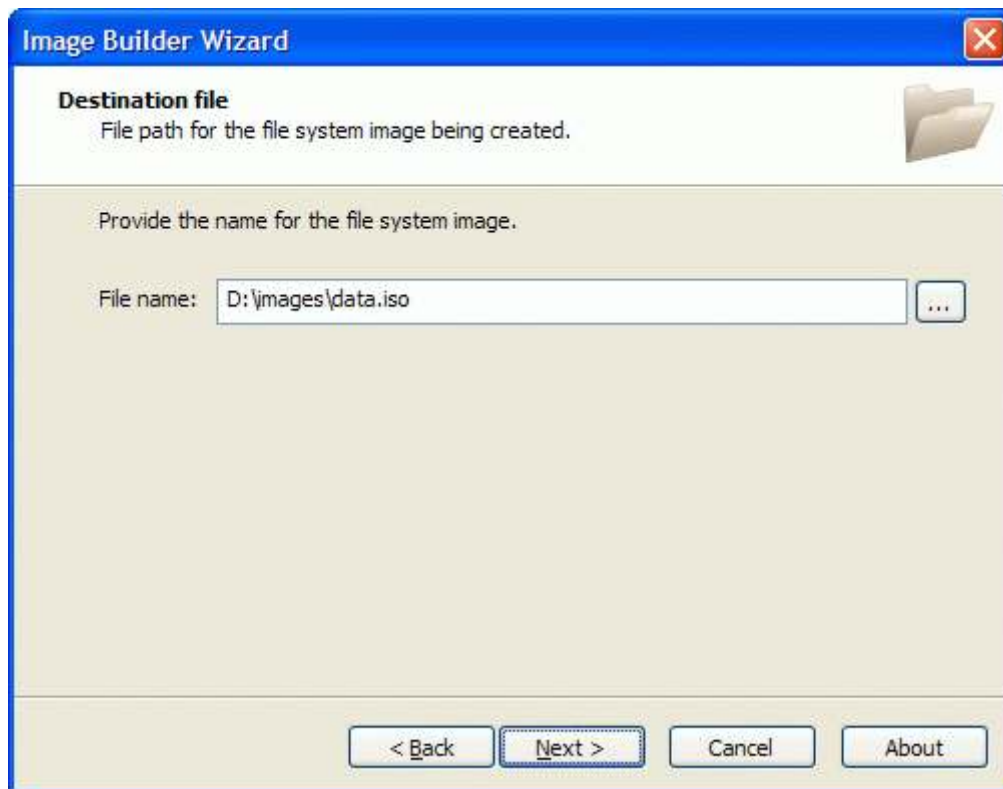
MANUAL

Welcome to **Image Building Wizard** dialog appears.



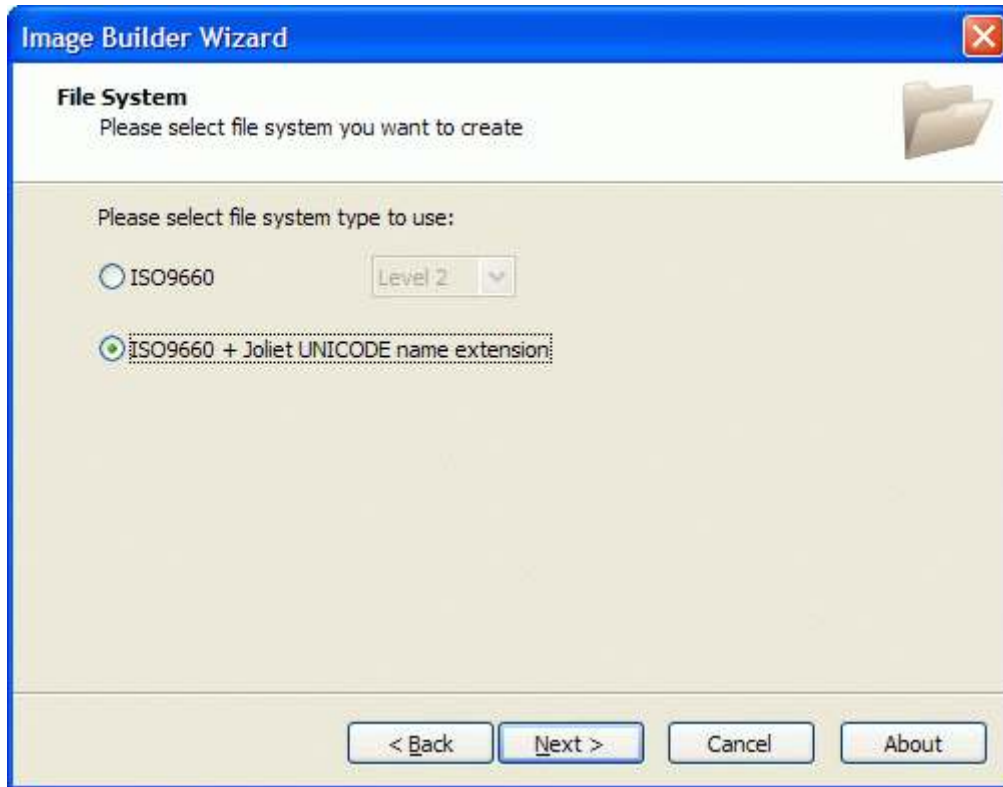
Press the **Next** button to continue.

Please specify the image file name you wish to create.



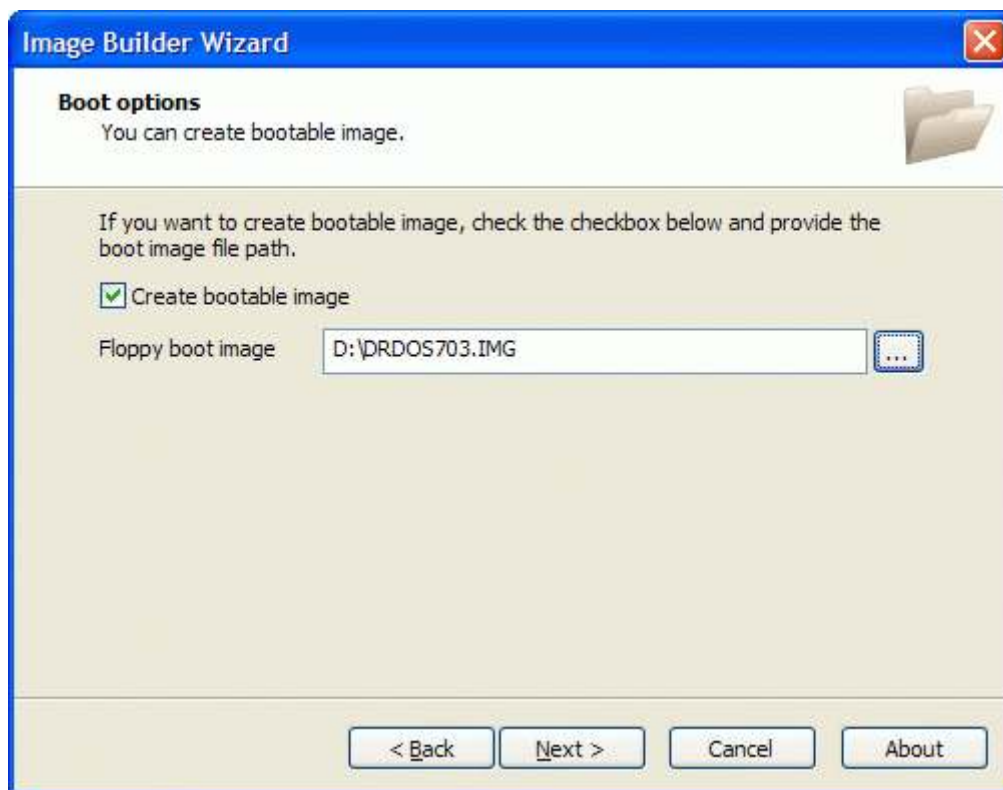
Press the **Next** button to continue.

Select the file system type to create. The default file system type is **ISO9660 + Joliet UNICODE name extensions**. The other available file system types are: **ISO 9660 Level 1** and **ISO 9660 Level 2**.



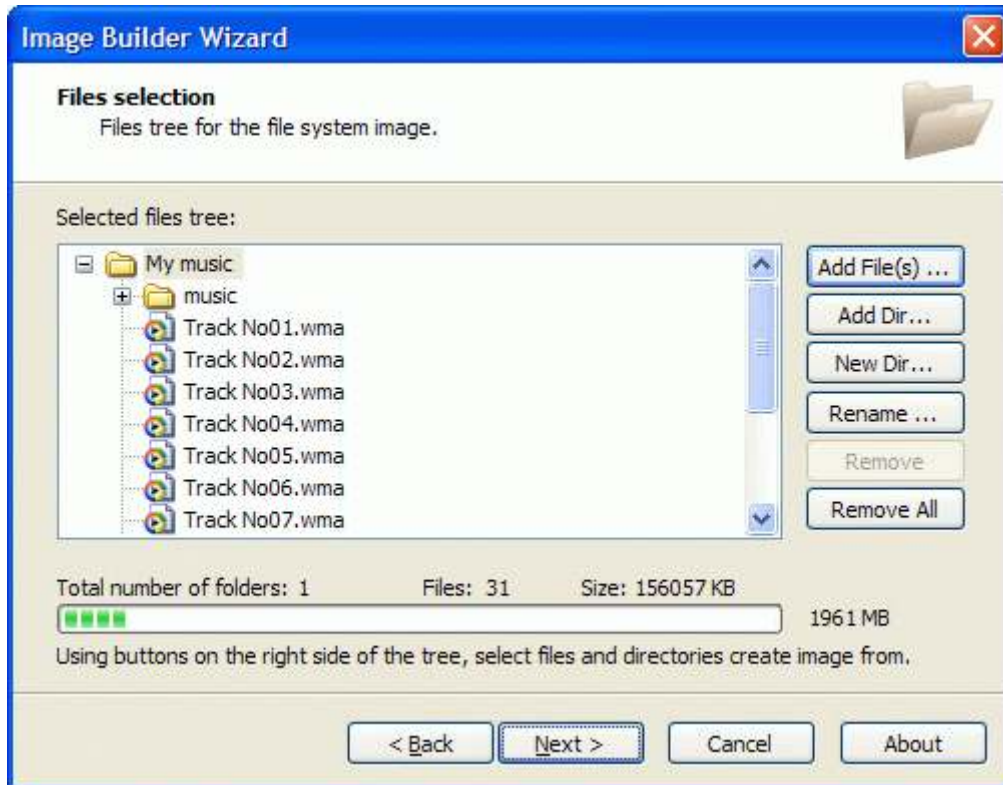
Press the **Next** button to continue.

If it is necessary to create bootable image you should check **Create bootable image** checkbox and provide floppy boot image.



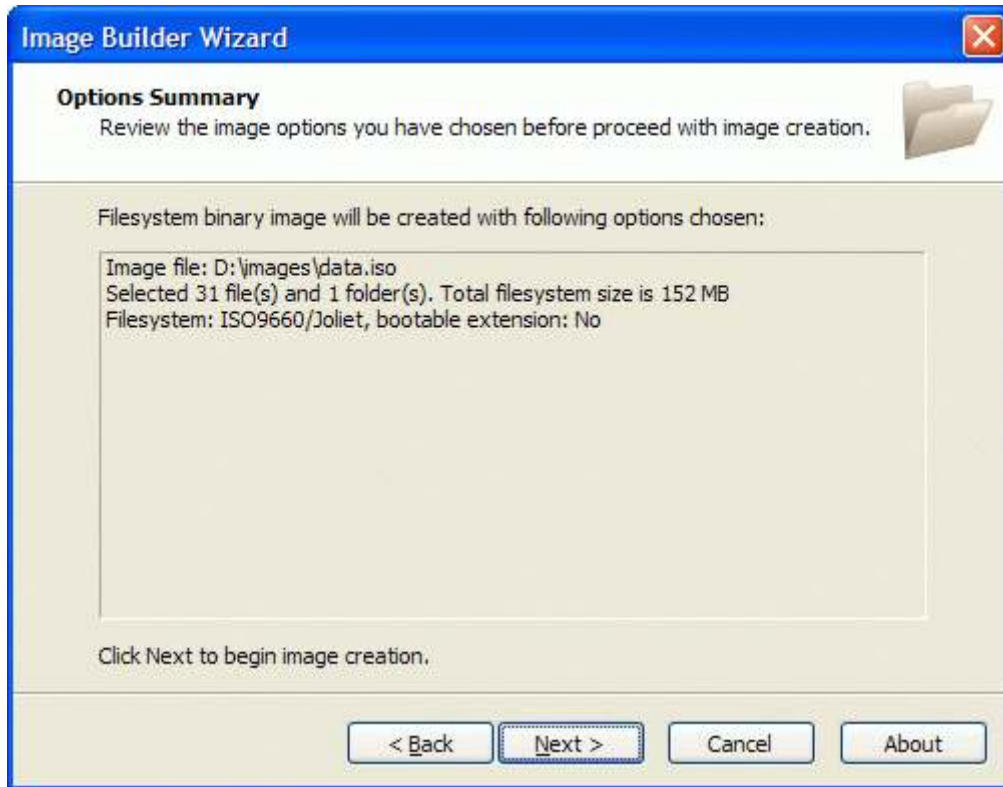
Press the **Next** button to continue.

Create list of files and directories using **Add File(s)**, **Add Dir**, **New Dir**, **Rename**, **Remove** and **Remove All** buttons. It is also possible to change the disc label - click the topmost folder, press **Rename** button and specify new disc label.



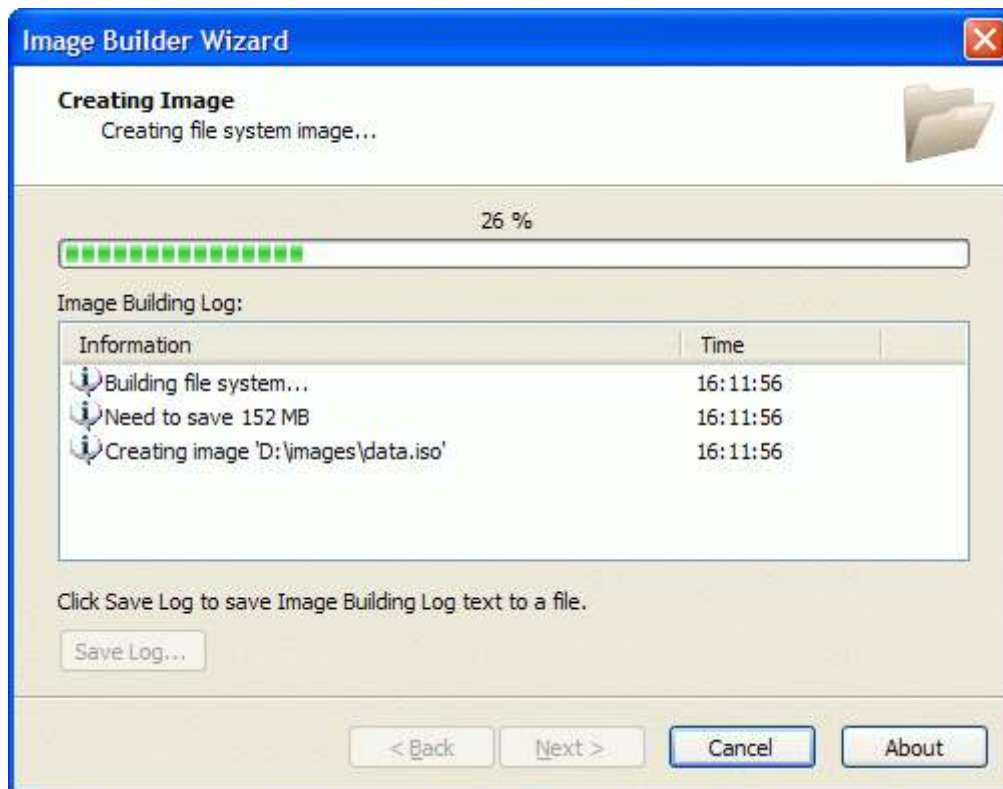
Press the **Next** button to continue.

Please review the options summary and make sure all of the options are correct ones (have been set by you on previous pages). If you need to make some changes press the **Back** button to toggle wrong settings.



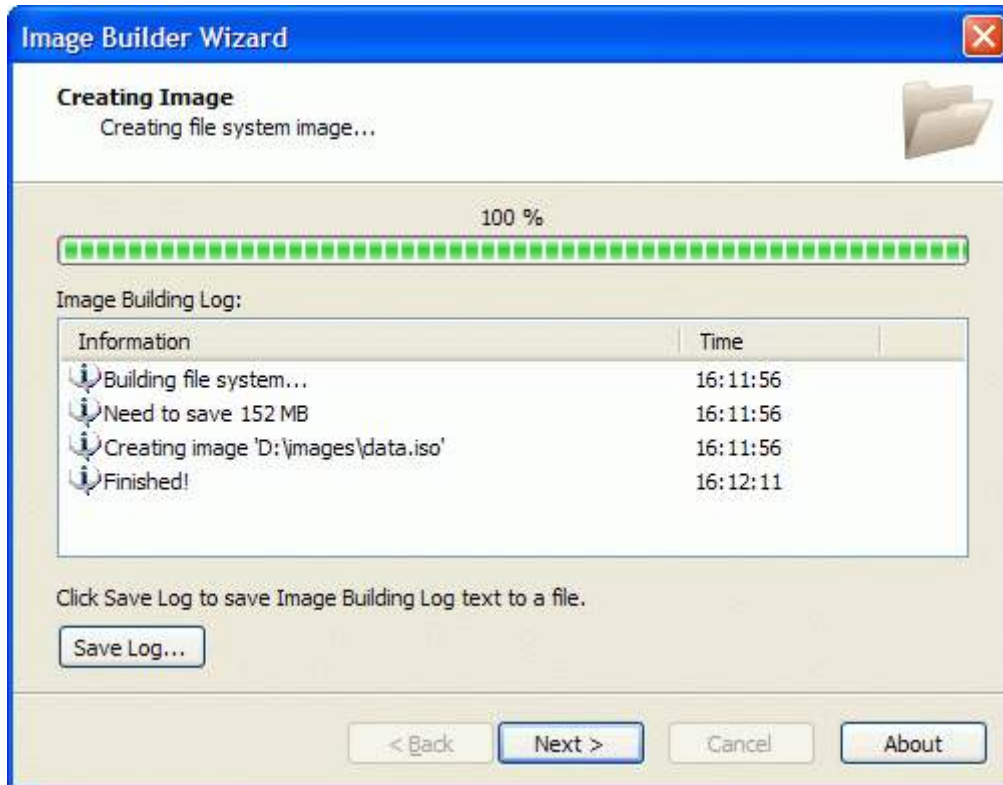
Press the **Next** button to begin image file building.

Image file building is in the progress.



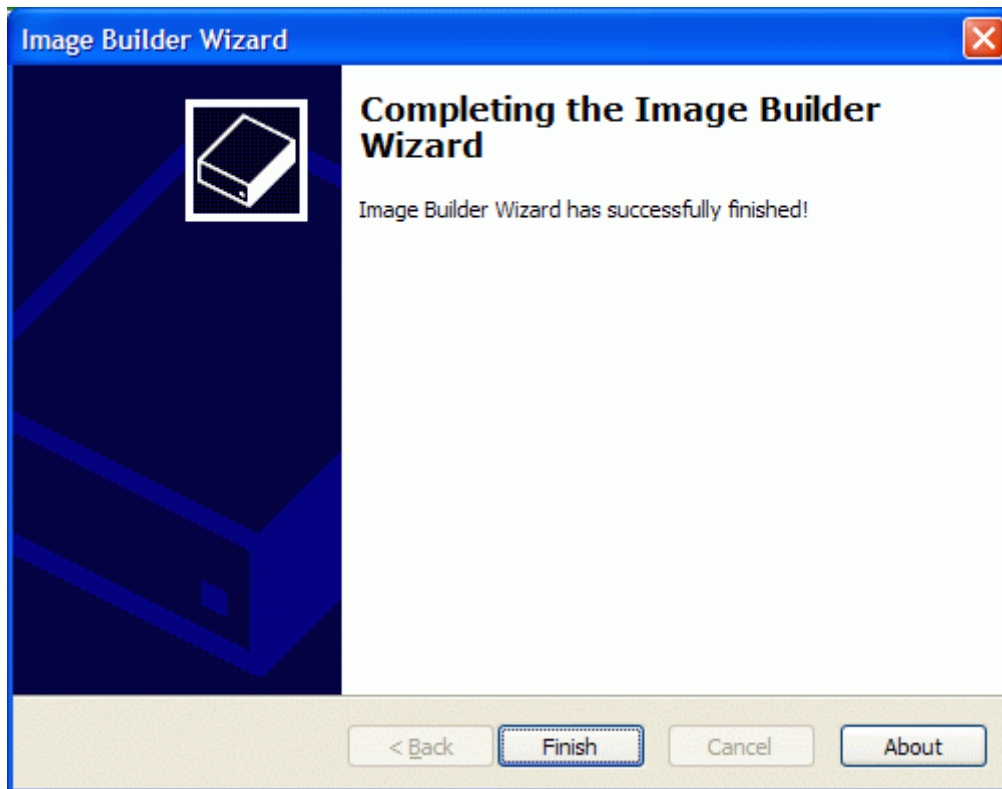
Press the **Cancel** button to cancel building or just wait for the process completion.

When image building is complete optionally you can save the log by pressing **Save Log** button. This option is useful when building problems occurred and you'd like to send failed operation log to the support.



Press the **Next** button to continue.

Completing the **Image Builder Wizard** dialog appears.



Press the **Finish** button to exit the wizard.

CONTACTS

Support E-mail: Support@RocketDivision.com

Support Forum: www.RocketDivision.com/forum

Support FAQ: www.RocketDivision.com/faq.html

Sales E-mail: Sales@RocketDivision.com

Phone: +38 067 53 222 33, +38 067 53 222 53

Fax: +38 044 414 8717

Rocket Division Software
04210, Kyiv, Ukraine
Heroes of Stalingrad Str. 18B/Office 21
www.RocketDivision.com